

ACES

Alternative Models for Juvenile Offenders:
Best Practices for Youth Mentorship and
Prevention Tactics



Empathy--Approach, Draw Near

Amazing Job Of Surviving

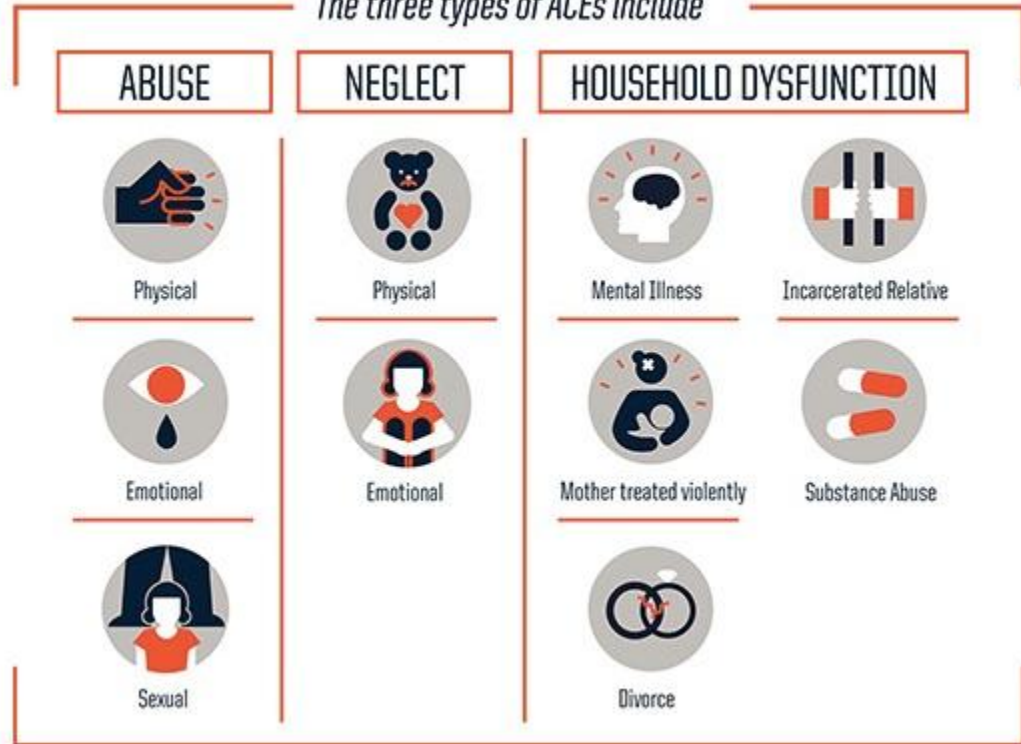
Not What We Want

We Need To Understand

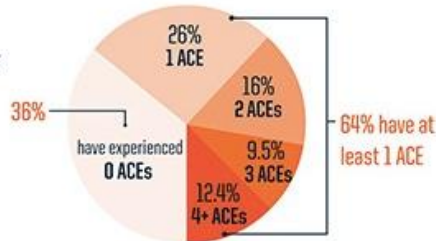
ACES

- Adverse Childhood Survey
- Behavior Makes Sense

The three types of ACEs include



Of 17,000 ACE study participants:



Outcomes

Possible Risk Outcomes:

BEHAVIOR



Lack of physical activity



Smoking



Alcoholism



Drug use



Missed work

PHYSICAL & MENTAL HEALTH



Severe obesity



Diabetes



Depression



Suicide attempts



STDs



Heart disease



Cancer



Stroke



COPD



Broken bones

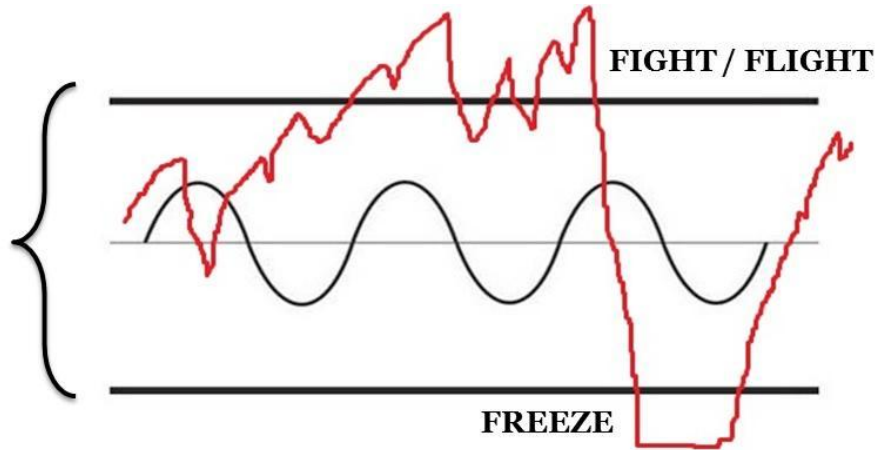
Probability of Outcomes

Given 100 American Adults

33 No ACEs	51 1-3 ACEs	16 4-8 ACEs
<u>WITH 0 ACEs</u> 1 in 16 smokes	<u>WITH 3 ACEs</u> 1 in 9 smokes	<u>WITH 7+ ACEs</u> 1 in 6 smokes
1 in 69 are alcoholic	1 in 9 are alcoholic	1 in 6 are alcoholic
1 in 480 uses IV drugs	1 in 43 uses IV drugs	1 in 30 use IV drugs
1 in 14 has heart disease	1 in 7 has heart disease	1 in 6 has heart disease
1 in 96 attempts suicide	1 in 10 attempts suicide	1 in 5 attempts suicide

Brain Health

Toxicity leads to brain health issues



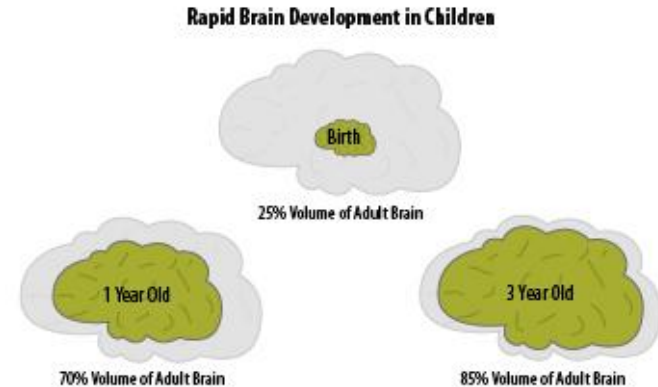
Brain Always Developing

Early Childhood

Teen Years

- Brain is not a computer
- Cat

Epigenetics



Source: *Wall Street Journal*, "Wise Beyond Their Years: What Babies Really Know," February 11, 2013

Implications: Juvenile Justice Implications

- First Study Of ACES and Juvenile Justice in Country, Spring 2014
- Over 64,000 youth surveyed

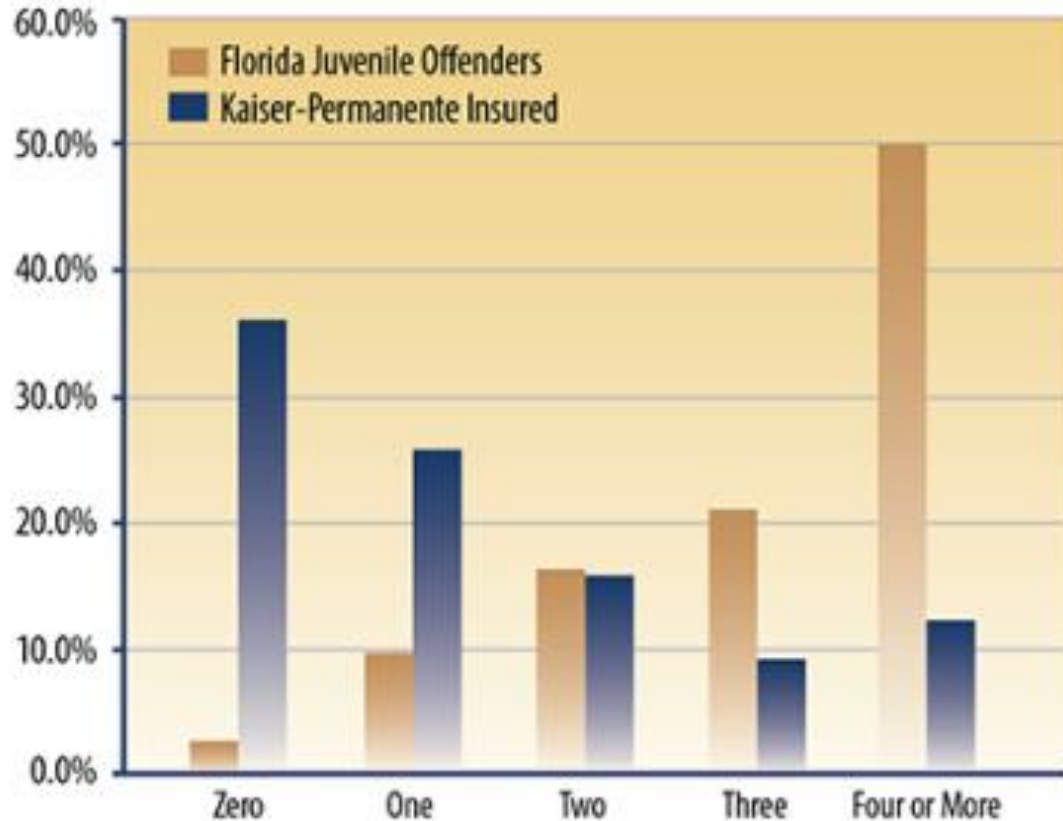
Florida Juvenile Justice ACE Results

2.8% Zero ACES compared to **34%** in original survey

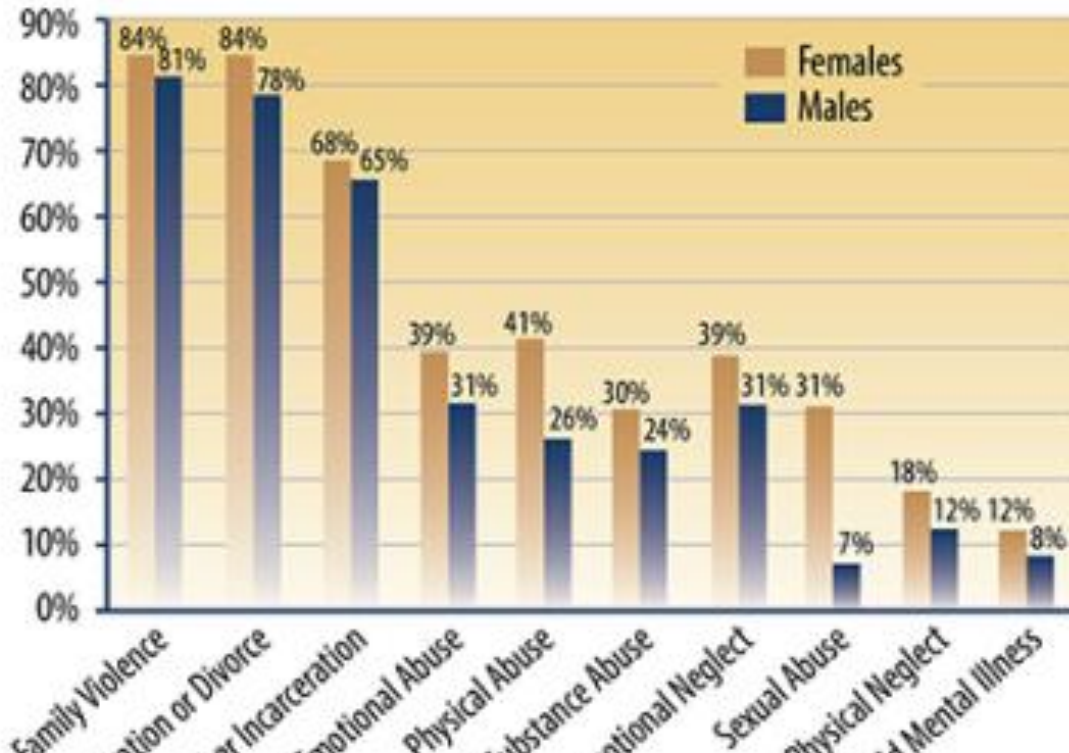
50% reported 4 or more Aces compared to 12.4% in original survey

- 2x likely to be smokers
- 12X to attempt suicide
- 7x alcoholic
- 10X to use street drugs injectables
- 240% likely hepatitis
- More divorces, work absences, depression

Original ACES Compared To FL Youth ACES



Comparison Of ACEs By Gender



Implications

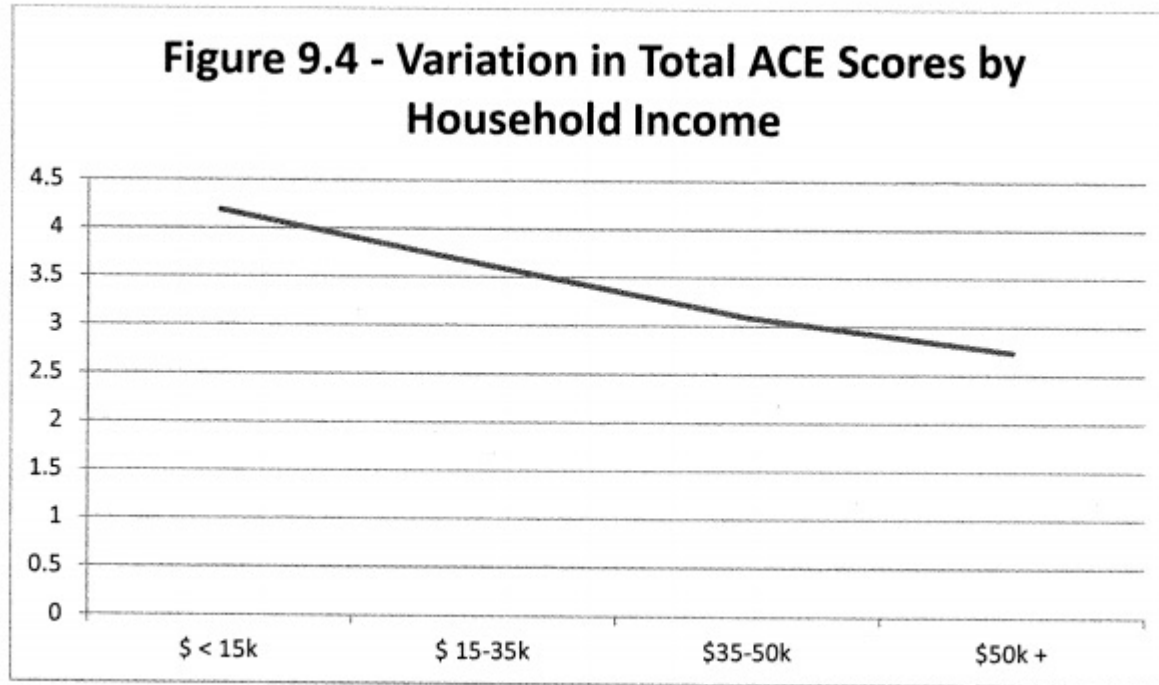
- “What happened” is key
- Prevention is best, but reality is injury
 - 80% of Camden City youth live below poverty line
 - 1-35 people were assaulted last year
- How to create a healing community that is responsive
 - Youth often involved in valiant survival efforts
 - We set programs that work for lower ACE scores

Clark County, WA Probation Youth

Table 9.5 – Variation in ACES by Household Income

	<u><\$15k</u>	<u>\$15k-\$35k</u>	<u>\$35-50k</u>	<u>>\$50k</u>
Psychological Abuse	43.0%	42.6%	46.8%	40.5%
Physical Abuse	32.8%*	23.6%	25.0%	19.0%
Sexual Abuse	19.8%	12.2%	16.2%	15.3%
Neglect	30.3%**	20.3%	17.6%	11.7%
Separated/Divorced Parents	90.1%**	84.2%	69.4%	59.3%
Household Substance Abuse	46.1%	50.0%	32.9%	37.4%
Household Mental Illness	34.4%**	22.6%	17.6%	17.2%
Household Member Incarcerated	80.8%**	69.3%	57.9%	52.8%
Domestic Violence	15.2%	14.2%	13.4%	8.6%*
Total Ace Score	4.19**	3.63	3.09	2.74

Clark County, WA Income And Aces



Clark County, WA Race/Ethnicity

Table 9.4 – Variation in ACES by Race/Ethnicity

	<u>White</u>	<u>Black</u>	<u>Hispanic</u>
Psychological Abuse	37.4%	38.9%	36.8%
Physical Abuse	22.9%	26.7%	21.4%
Sexual Abuse	14.7%	13.0%	11.1%
Neglect	19.9%	19.1%	17.1%
Separated/Divorced Parents	77.6%	92.0%**	76.8%
Household Substance Abuse	39.3%	38.9%	33.3%
Household Mental Illness	22.4%	19.1%	11.1%**
Household Member Incarcerated	65.3%	71.8%	61.5%
Domestic Violence	12.4%	13.7%	14.5%
Total Ace Score	3.56	3.79	3.12*

Hopeworks

Vision moved from:

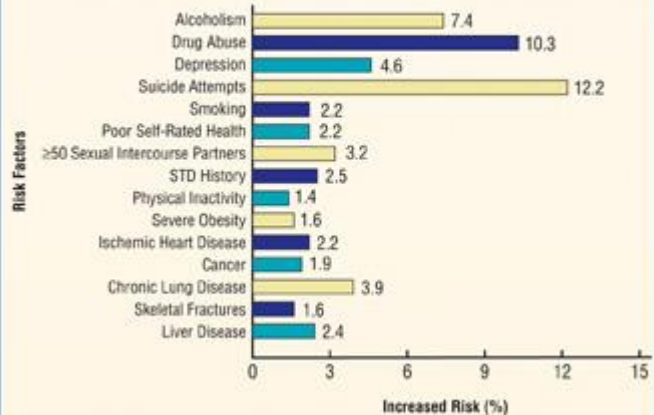
- Creating Safe Pathways So Youth Can Have DREAMS
- Creating Safe Pathways So We Can Learn Our History And Have Options For A Future

ACES allows us to understand INJURY (what has happened to brain) so that we can get to HEALING (resilience).



Figure 1

Risks Associated With Four or More Experiences of Childhood Trauma and Violence



“Re-Entry?”

Rehabilitative System---from what?

To return to what?

Move from surviving to thriving

Surviving is helpful

Deep empathy

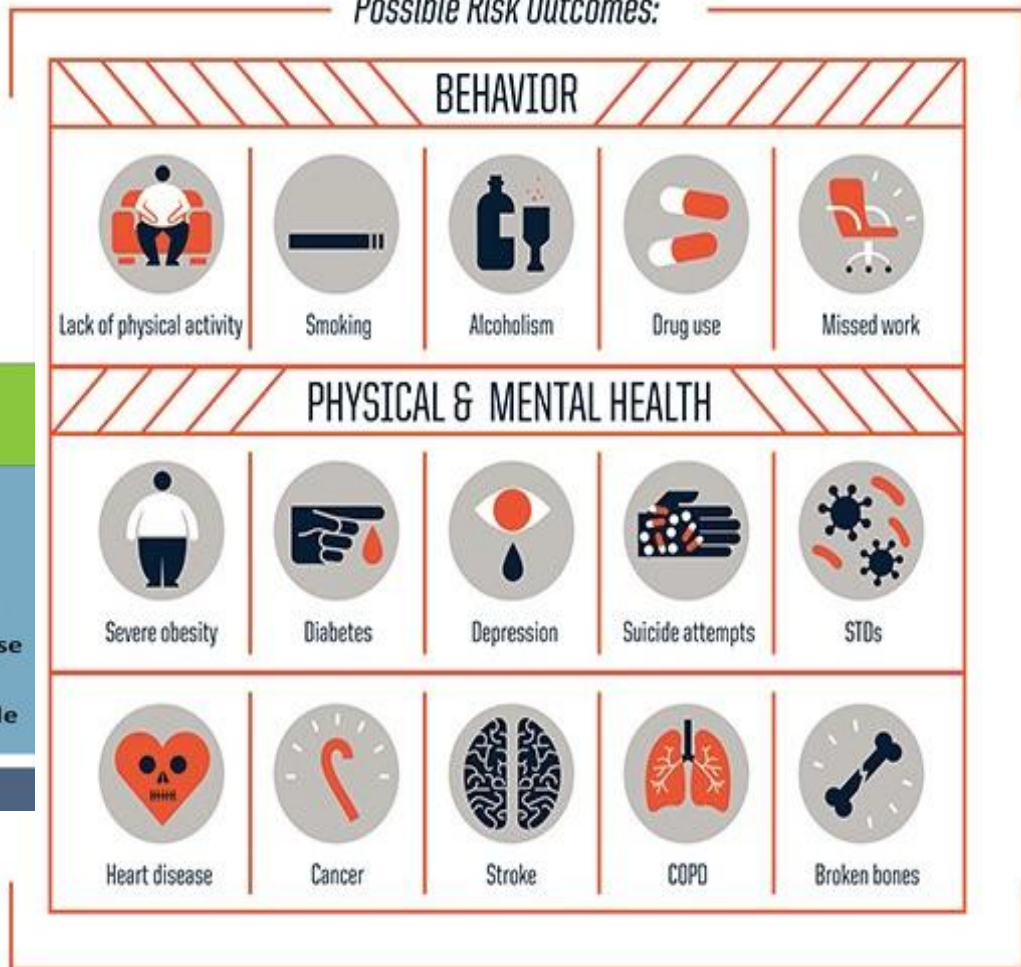
Outcomes

Probability of Outcomes

Given 100 American Adults

33 No ACEs	51 1-3 ACEs	16 4-8 ACEs
<u>WITH 0 ACEs</u> 1 in 16 smokes	<u>WITH 3 ACEs</u> 1 in 9 smokes	<u>WITH 7+ ACEs</u> 1 in 6 smokes
1 in 69 are alcoholic	1 in 9 are alcoholic	1 in 6 are alcoholic
1 in 480 uses IV drugs	1 in 43 uses IV drugs	1 in 30 use IV drugs
1 in 14 has heart disease	1 in 7 has heart disease	1 in 6 has heart disease
1 in 96 attempts suicide	1 in 10 attempts suicide	1 in 5 attempts suicide

Possible Risk Outcomes:



Jeff Putthoff, SJ
Jeff@hopeworks.org