

Camden City School District: Leveraging Leadership



Rutgers-Camden
Friday, February 13, 2015

Agenda

- **Points of Progress**
- **Continuing Challenges**
- **Moving Forward**
- **Leveraging Leadership**

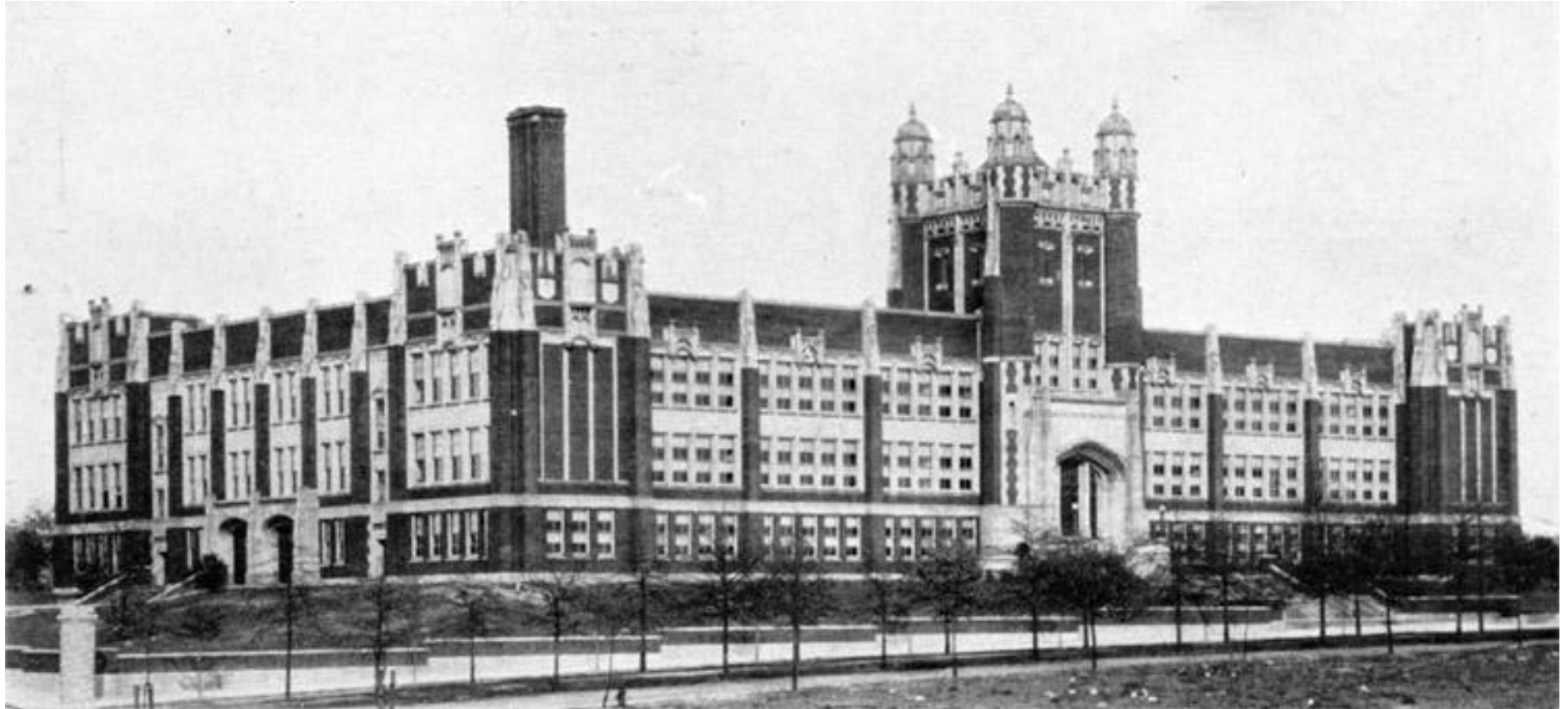
Points of Progress:

A comprehensive approach to improving District schools

For almost a year, we have been working together to fulfill the Camden Commitment, and we are making progress.

- ✧ **Support for Principals** - Critical new coaching and professional development
- ✧ **Support for Teachers** - Every teacher receiving weekly classroom coaching
- ✧ **New High-quality Schools** - Three new neighborhood schools providing rigorous education
- ✧ **Early Learning** - More students in pre-school than ever before
- ✧ **Focus on Safety** - Citywide revival of Safe Corridors and Parent Rangers programs and more positive school environments through PBIS
- ✧ **New Technology** - Providing 2,300 new laptops for students and staff
- ✧ **Raising the Bar** - Developing a new, more challenging curriculum for all students

Points of Progress:
At least \$50 million to modernize Camden High School

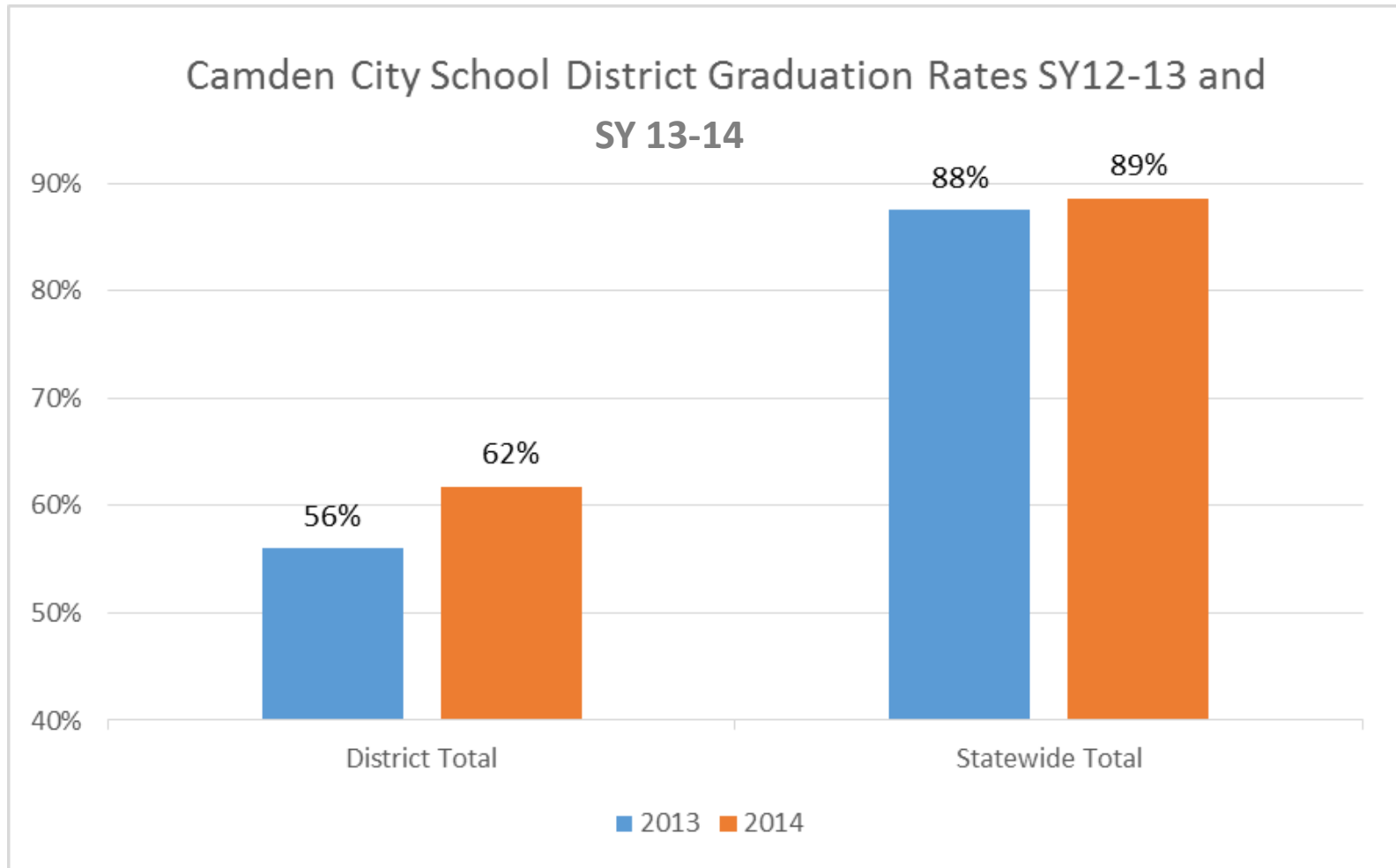


Agenda

- **Points of Progress**
- **Continuing Challenges**
- **Moving Forward**
- **Leveraging Leadership**

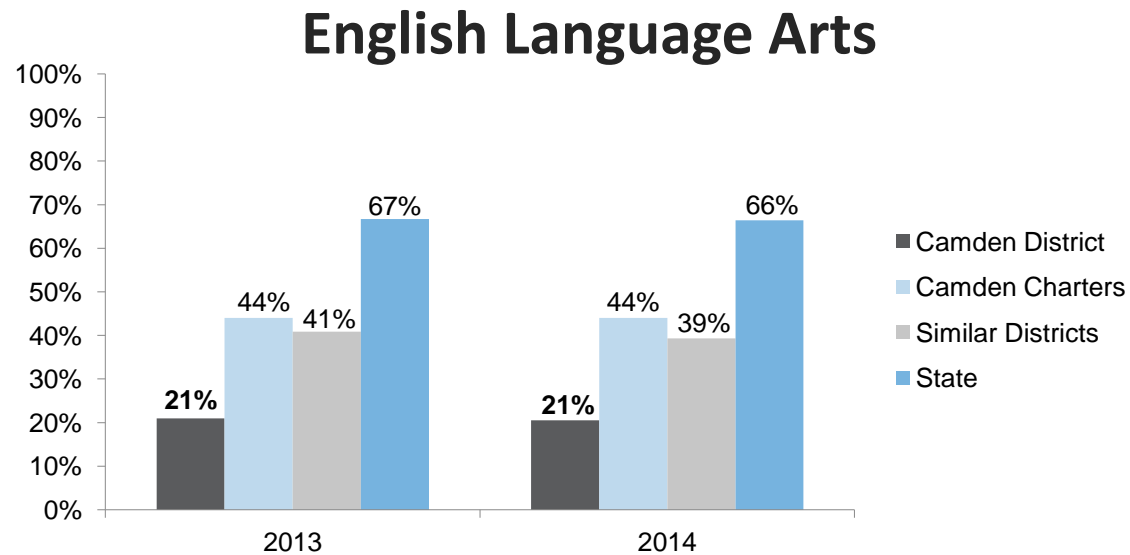
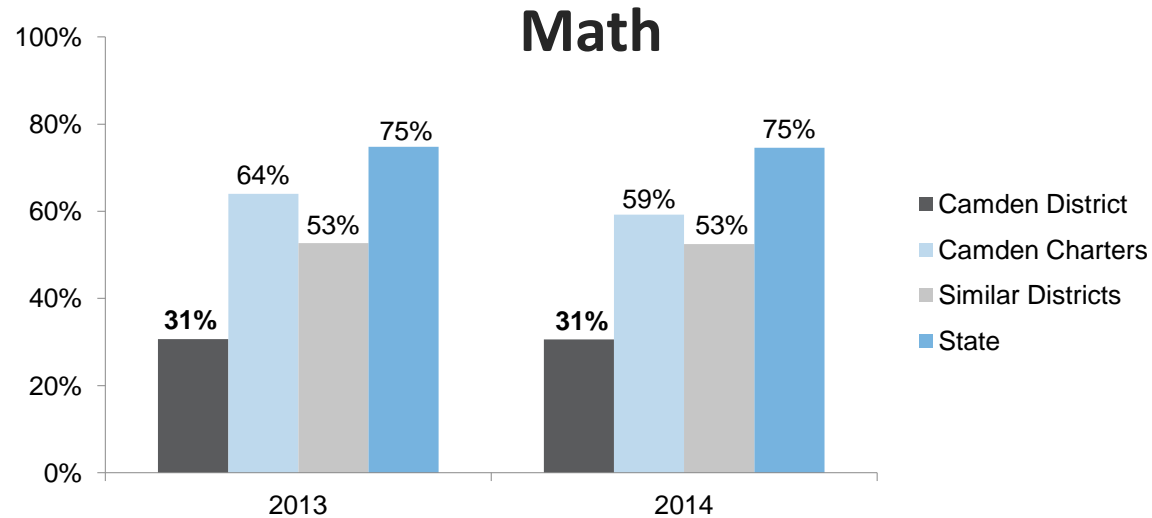
Continuing Challenges:

District High School Graduation Rate



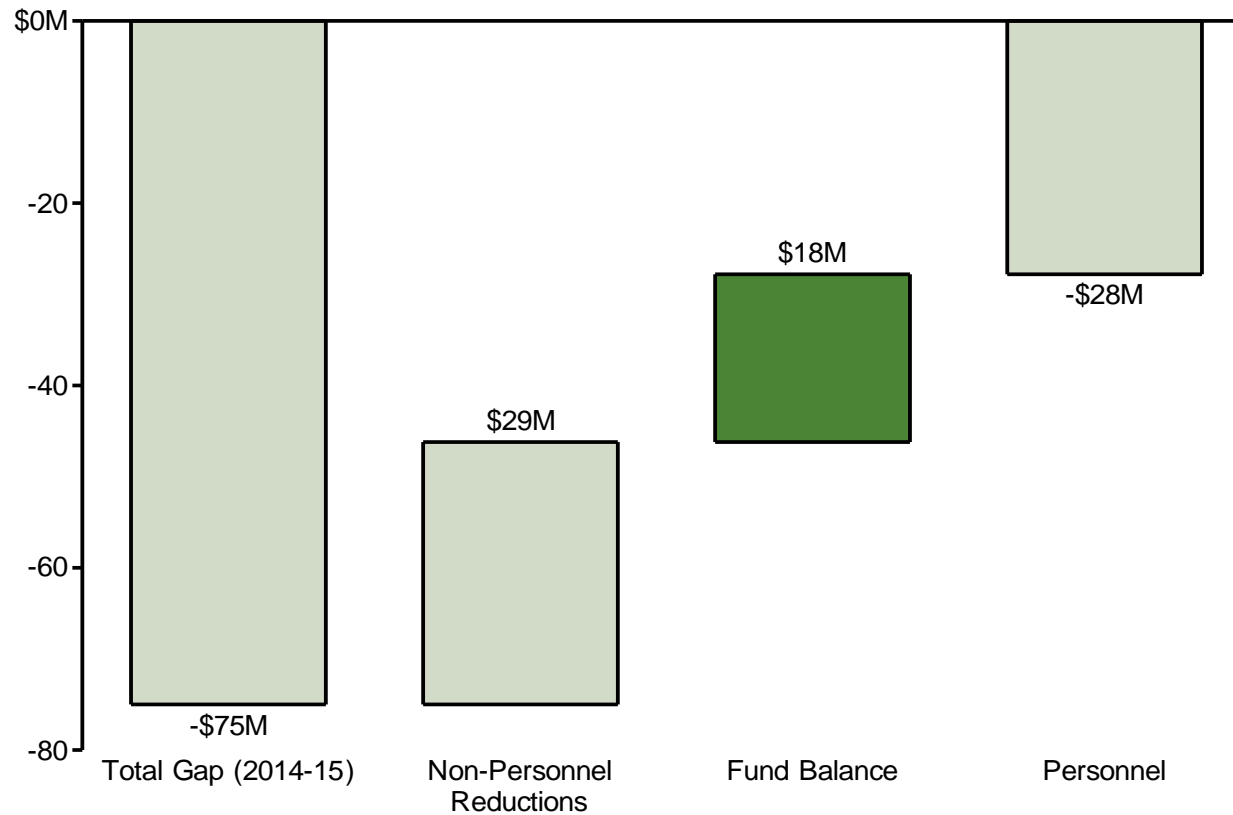
Note: District total for SY12-13 has been adjusted to include Creative Arts/Morgan Village's graduation rate.

Continuing Challenges: *Grades 3-8 Performance*



Continuing Challenges: *Budgetary Shortfalls*

Closing the Budget Gap, 2014-15



Agenda

- **Points of Progress**
- **Continuing Challenges**
- **Moving Forward**
- **Leveraging Leadership**

Moving Forward:

Development of School Information Cards

Many pieces of information go into identifying a great school – not just one.

Data and Information about the School

- Enrollment and attendance
- Student performance (NJ ASK, HSPA, MAP)
- Special programs

Summary of School Site Visits

- Clear, simple checklist focused on school culture and classroom instruction
- 36 visits facilitated by District's Office of School Support leadership
- Participants from district, charter, and Renaissance schools

School Community Survey Results

- What school community members think about school safety, family and community engagement, and teaching and learning, and more
- 2014-15 parent surveys during November conferences; staff and student surveys happening now

Moving Forward: School Information Cards and community engagement

CAMDEN CITY SCHOOL DISTRICT 2014 SCHOOL INFORMATION CARD (SAMPLE DATA - NOT REAL)

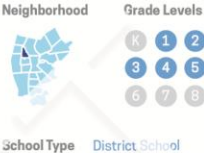
Sample Family School



123 Main Street
Camden, NJ 08101

(856) 485-2934
www.samplecamdenfamilyschool.org

Principal: Jane Doe
Principal of this School Since: 2012



ACADEMIC PERFORMANCE

This rating is based on the school's NJ ASK English and Math Proficiency & Growth, compared to similar public schools in New Jersey. Growth counts twice as much as proficiency.

	2014	% Change	District	State	This school scored better than % of similar public schools.
English Language Arts Proficiency	70%	-2%	85%	82%	85%
English Language Arts Growth	20%	+8%	5%	8%	70%
Mathematics Proficiency	60%	+13%	55%	69%	75%
Mathematics Growth	15%	-3%	5%	9%	80%

4th Grade Science (NJ ASK Science)	70%	+4%	85%	82%	85%
8th Grade Science	63%	+8%	55%	81%	70%

Early Childhood Readiness (K-3 MAP) Fall-to-Spring Growth **8%** Year-to-Year Growth **4%**

SCHOOL VISIT

This rating is based on an annual school visit by a team of Camden school leaders. The team uses a checklist to document Positive School Culture, Rigorous Classroom Instruction, and Active Student Engagement.

Positive School Culture **100%** Rigorous Classroom Instruction **80%** Active Student Engagement **98%**

SCHOOL QUALITY RATING

=

Academic Performance

+

School Visit

The school's Academic Performance and School Visit are combined to equal this Academic Quality Rating.

Under Performing

Needs Improvement

Making Progress

On Track

CAMDEN CITY SCHOOL DISTRICT 2014 SCHOOL INFORMATION CARD (SAMPLE DATA - NOT REAL)

Sample Family School



SCHOOL MISSION

Sample Family School's mission is to provide all students with a rigorous, world-class education that prepares them to succeed in college, career, and life. Sample Family School is dedicated to ensuring that all students receive the academic,

developmental, and social and emotional supports and services needed to become productive citizens who can achieve their dreams.

Year Opened **2009**
School Uniform Colors **Blue, White**

BASIC INFORMATION

Student Enrollment **500**

	School	District
Student Retention Rate	95%	98%
Student Attendance	95%	94%
English Language Learners	80%	82%
Students Receiving Special Education Services	88%	83%
Students Receiving Free / Reduced Price Lunch	90%	90%
Student Teacher Ratio	15:1	18:1
Teacher Attendance	98%	95%

SCHOOL PROGRAMS & PARTNERSHIPS

Community Partnerships <ul style="list-style-type: none">Program 1Program 2Program 3Program 4Program 5	After-School Programs <ul style="list-style-type: none">Program 1Program 2Program 3Program 4Program 5
Special Programs <ul style="list-style-type: none">Program 1Program 2Program 3Program 4Program 5	Sports / Athletics <ul style="list-style-type: none">Program 1Program 2Program 3Program 4Program 5Program 6Program 7Program 8

SCHOOL COMMUNITY SURVEY

Results of the annual survey taken by 72 parents, students, and teachers on the climate and culture of the school. This represents 80% of students, 90% of school staff, and 70% of parents at Sample Family School.

Survey Categories	Student	School Staff	Parents
Safety & Physical Environment Positive attitudes towards building use and scheduling, and physical safety attitudes toward the building.	80%	87%	84%
Social & Emotional Supports Positive attitudes towards social environment, individual emotional safety, and student behavior.	80%	87%	84%
Teaching & Learning Positive attitudes towards the academic climate of the school and support for student development, and overall instructional quality.	80%	87%	84%
Community & Collaboration Belief that there are open and honest communications among students and staff, and how well the school community works together.	80%	87%	84%
Family & Community Engagement Parent and community involvement and satisfaction with the academic and social life of the school.	80%	87%	84%
School Community Morale Pride and identification with the school's character, and the ability to rally to healthy and positive outcomes.	80%	87%	84%

Agenda

- **Points of Progress**
- **Continuing Challenges**
- **Moving Forward**
- **Leveraging Leadership**